

SHAFIK

HG-466

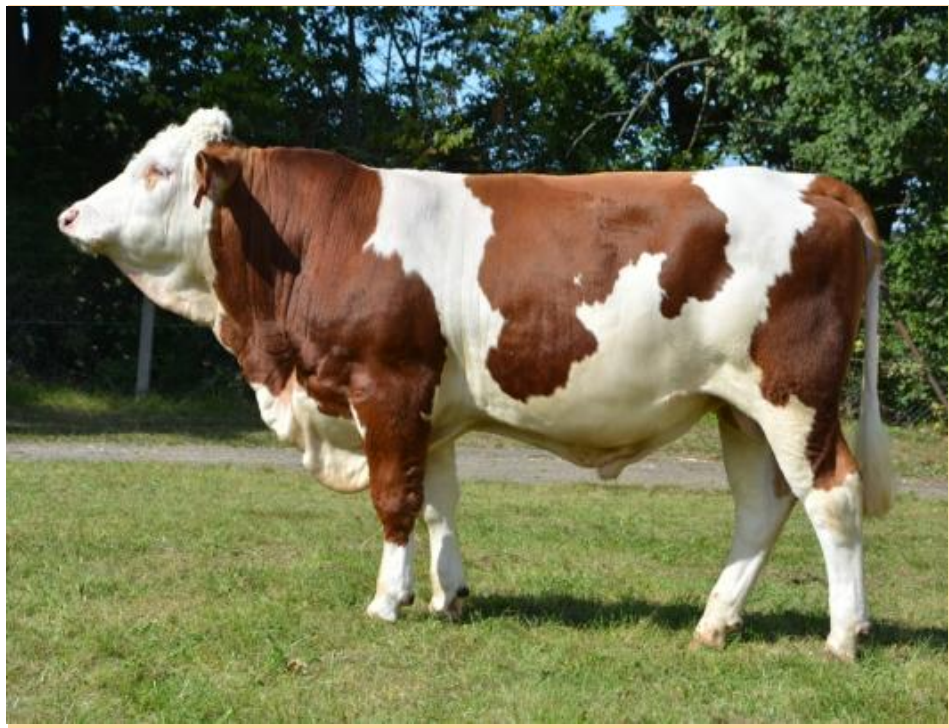
GZW

115

WALOT x EVERGREEN

Number: CZ 70307064

date of birth: 12.5.2018



LINEAR TRAITS

Daughters 105 (from CR: 105)

	88	100	112	124	
size					103
muscling					104
feet&legs					105
udder					115
height at cross					100
rump lenght					104
rump width					106
rump angle	«				86
body depth					111
hock angularity					94
hocks					99
fetlock					100
foot angle					95
fore udd. attachm.					113
fore udder lenght					109
rear udder lenght					106
central ligament					95
udder depth					104
rear teat placement					97
teat lenght					103
teat thickness					105
fr. teat placement					114
udder cleanness					101

PARTIAL INDEXES

MW

122

FW

103

FIT

90

LGV

100



PRODUCTION BV DAC: 04/2024 R 97 % Daughters : 169 Herds: 39

Kg M

+684

% F

+0.08

Kg F

+36

% P

+0.07

Kg P

+30

MANAGEMENT TRAITS BV

calving ease

104

m .calving ease

108

fertility index

87

SCC

88

robot. index

107

DAUGHTERS PRODUCTION - AVG. 1 LACT.

Kg M

7886

% F

4.05

Kg F

319

% P

3.60

Kg P

284